



Appendix 14.1

Scheme Walkover Summary

Contents

Appendix A14.1: Scheme Walkover Summary 1

1.1 Introduction 1

1.2 Summary 2

1.3 Photos 3

Appendix A14.1: Scheme Walkover Summary

1.1 Introduction

The following is a summary of the observations by the Land, Soils, Geology and Hydrogeology Environmental Impact Assessment Team following physical walkovers of the scheme. These walkovers occurred on 14 January 2020 and 9 July 2021.

Not all observations have been included in this summary for conciseness. Typically, only observations that could not have been determined from the desk study and that are relevant to the Land, Soils, Geology and Hydrogeology Chapter have been included. The omission of an observation or a feature does not negate the feature's importance in terms of the Land, Soils, Geology and Hydrogeology environmental impact assessment.

The observations are summarised in Table 1 and the corresponding photos in Table 2 of this Appendix.

1.2 Summary

Table 1: Scheme Walkover Summary

Observation	General Arrangement (GA) Drawing Sheet Number (refer to Volume 3 of the EIAR for GA drawings)	Description	Possible Impact	Photo Number
Bunds of made ground	Sheet 6	At the north-western corner of the junction of Malahide Road with Clarehall road there are made ground bunds immediately adjacent to the road behind the fence.	This may pose an issue for the earthworks balance and waste assessment.	Clongriffin_Image05
Bunds of made ground	Sheet 6	There is a low height bund constructed along the fence line on the western side of Malahide road opposite Tesco, Clarehall. It may contain anthropogenic material.	This may pose an issue for the earthworks balance and waste assessment.	Clongriffin_image06
Raised ground / potentially construction compound	Sheet 8	The ground is raised between Buttercup Park and Malahide Road. A proposed construction compound is to be located within this green area, it is likely that the topsoil will be removed and level changes will be required at this location to accommodate the construction compound.	This may pose an issue for the earthworks balance and waste assessment.	Clongriffin_image15
Artane Roundabout	Sheet 13 & 14	There is a notable level change at the roundabout. There will be earthworks required to achieve the proposed road levels.	This may pose an issue for the earthworks balance and waste assessment.	Clongriffin_image10
Old River	Sheet 13 & 14	Old river south of Artane Roundabout, which can be seen on the 25inch Historic Map at present day Mornington Grove. This is associated with a strip of alluvial deposits, so it may impact road design. However, no evidence of this old river was encountered during the site walkover.	This may pose an issue for the earthworks balance due to the requirement to excavate soft ground and creating a pathway to groundwater.	N/A
Donnycarney Bridge	Sheet 17	The proposed scheme passes over the Donnycarney bridge at this location which allows access over the culverted River Wad. In addition, there is a petrol station close to Donnycarney Bridge which may also be a potential source of contamination.	This may pose an issue for the earthworks balance and waste assessment and mobilising contaminants into the groundwater.	Clongriffin_image19 and Clongriffin_image20.
Alternative cycle route	Sheets 20 & 21	This route is considered an alternative to the current cycle route outlined in the drawings.	This may pose an issue for the earthworks balance and waste assessment.	Clongriffin_image21
Petrol stations	Sheet 09, 14 & 17	Two petrol stations are located along the Malahide Road and a third located near Donnycarney. A disused petrol station is also located opposite Belcamp Lane. Historic activities at petrol stations may have resulted in oil leaks into the surrounding soils and groundwater in the past.	This may pose an issue for the earthworks balance and waste assessment and mobilizing contaminants into the groundwater.	Clongriffin_image16, 17 and 18


1.3 Photos

Table 2: Scheme Walkover Photos

Photo ID	Caption	Date Taken	Coordinates
Clongriffin_image05	Overgrown area with bunds of potential made ground	14/01/2020	721177, 740715 (ITM)



Key plan:

 Circle denotes approximate location of photo
with triangle denoting approximate direction of photo

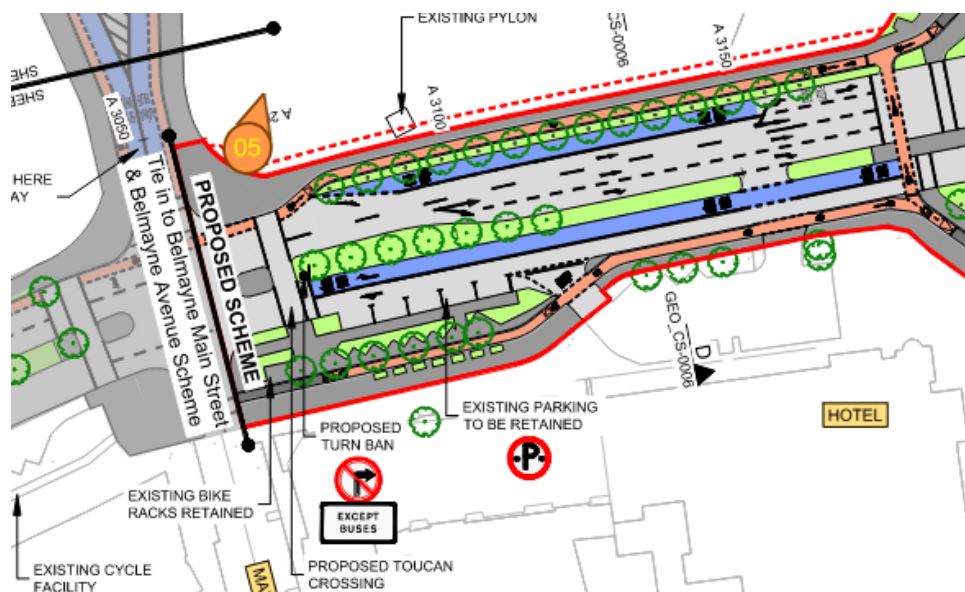


Photo ID	Caption	Date Taken	Coordinates
Clongriffin_image06	Image of raised verge along Malahide Road	14/01/2020	721079, 740717 (ITM)



Key plan

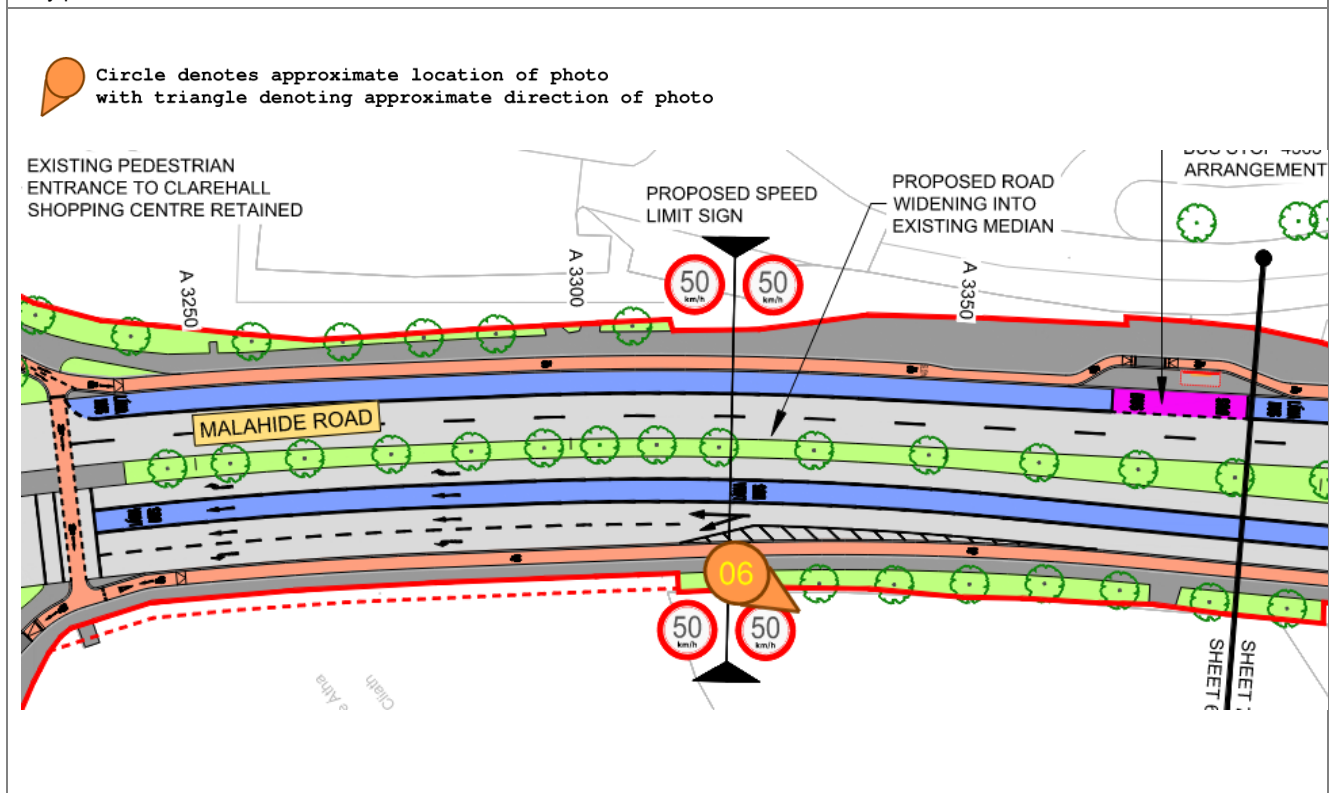



Photo ID	Caption	Date Taken	Coordinates
Clongriffin_image10	Image of raised verge along Malahide Road and surrounding the Roundabout; also note raised mound on roundabout	14/01/2020	719432, 738473 (ITM)



Key plan

 Circle denotes approximate location of photo
with triangle denoting approximate direction of photo

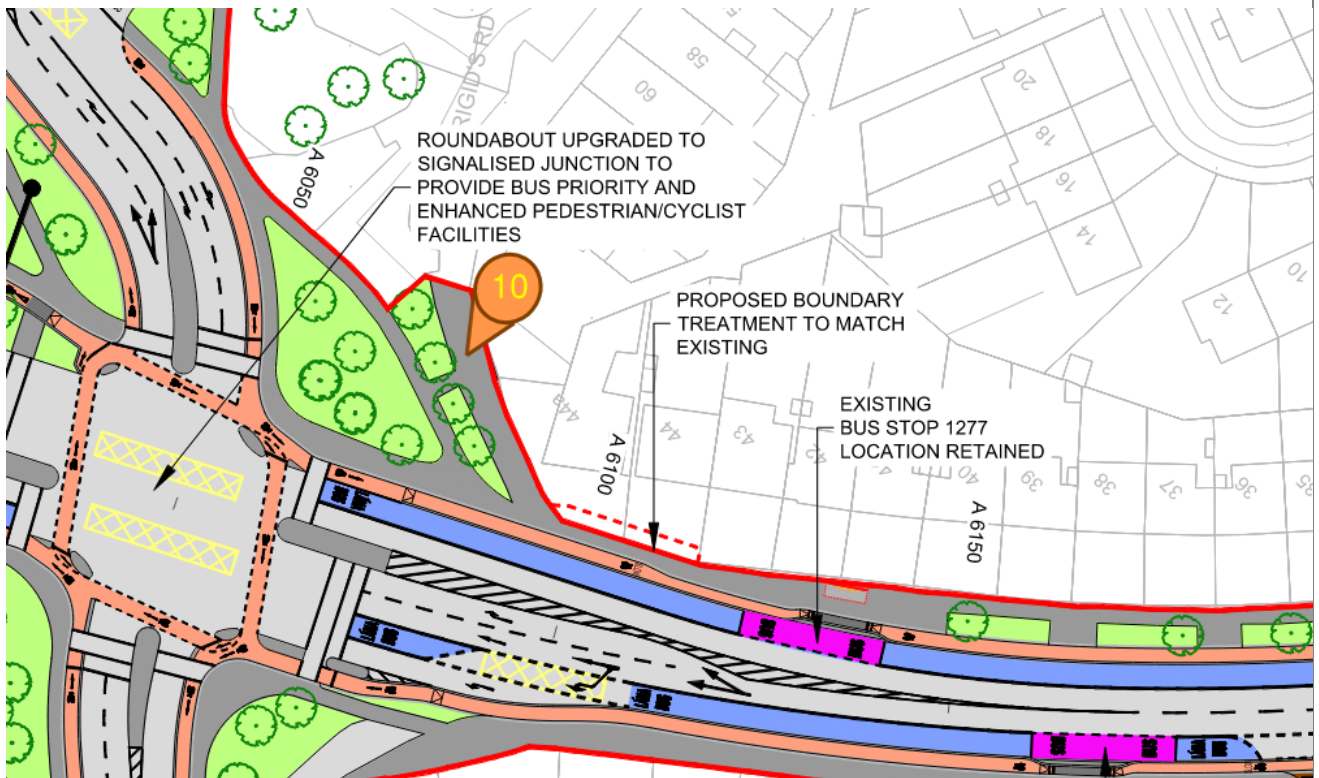


Photo ID	Caption	Date Taken	Coordinates
Clongriffin_image15	Image of proposed location for a construction compound at Buttercup Park.	09/07/2021	720618, 740268 (ITM)



Key plan

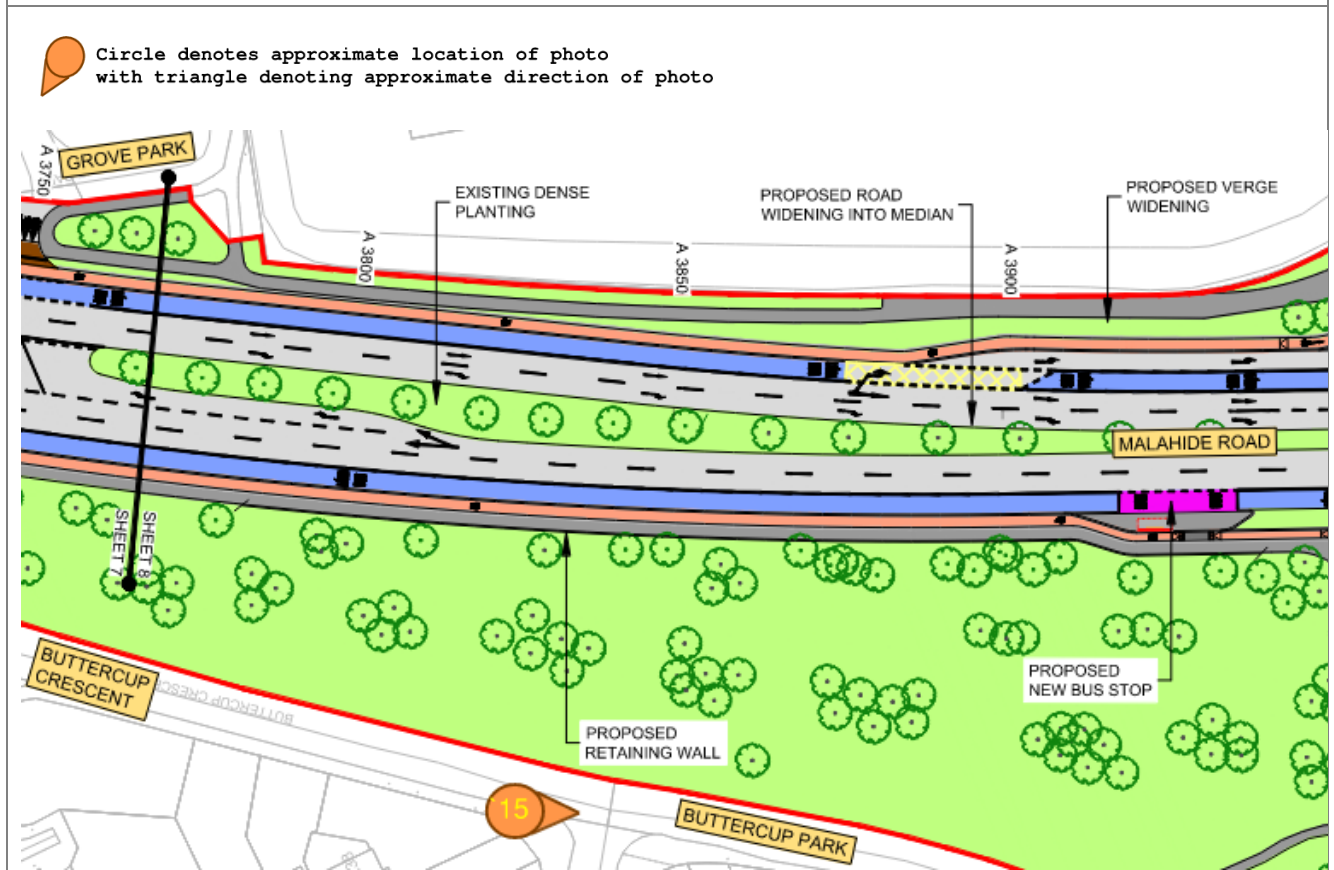



Photo ID	Caption	Date Taken	Coordinates
Clongriffin_image16	Image of Texaco Service Station on Malahide Road.	09/07/2021	720492, 739951 (ITM)



Key plan

 Circle denotes approximate location of photo with arrow denoting approximate direction of photo

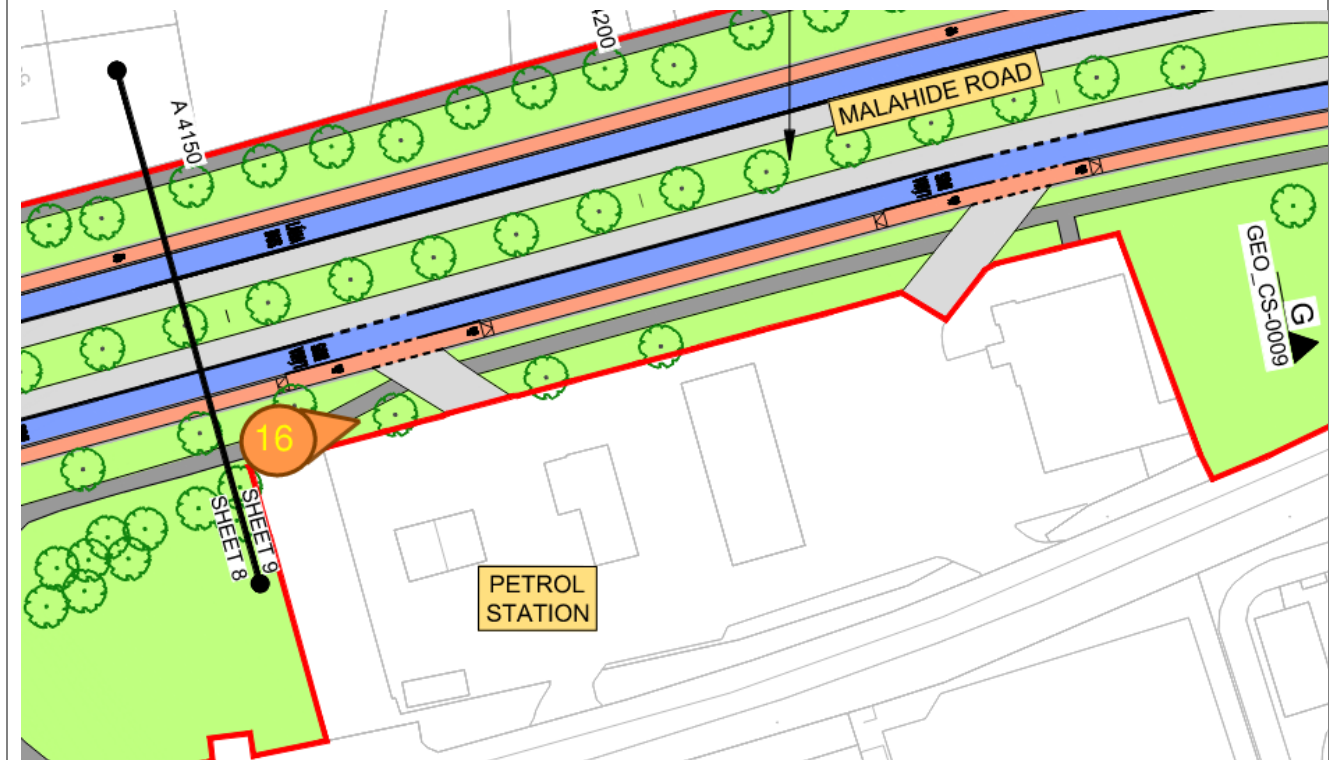



Photo ID	Caption	Date Taken	Coordinates
Clongriffin_image17	Image of Circle K Artane Service Station on Malahide Road	09/07/2021	719210, 738352 (ITM)



Key plan

 Circle denotes approximate location of photo
with triangle denoting approximate direction of photo

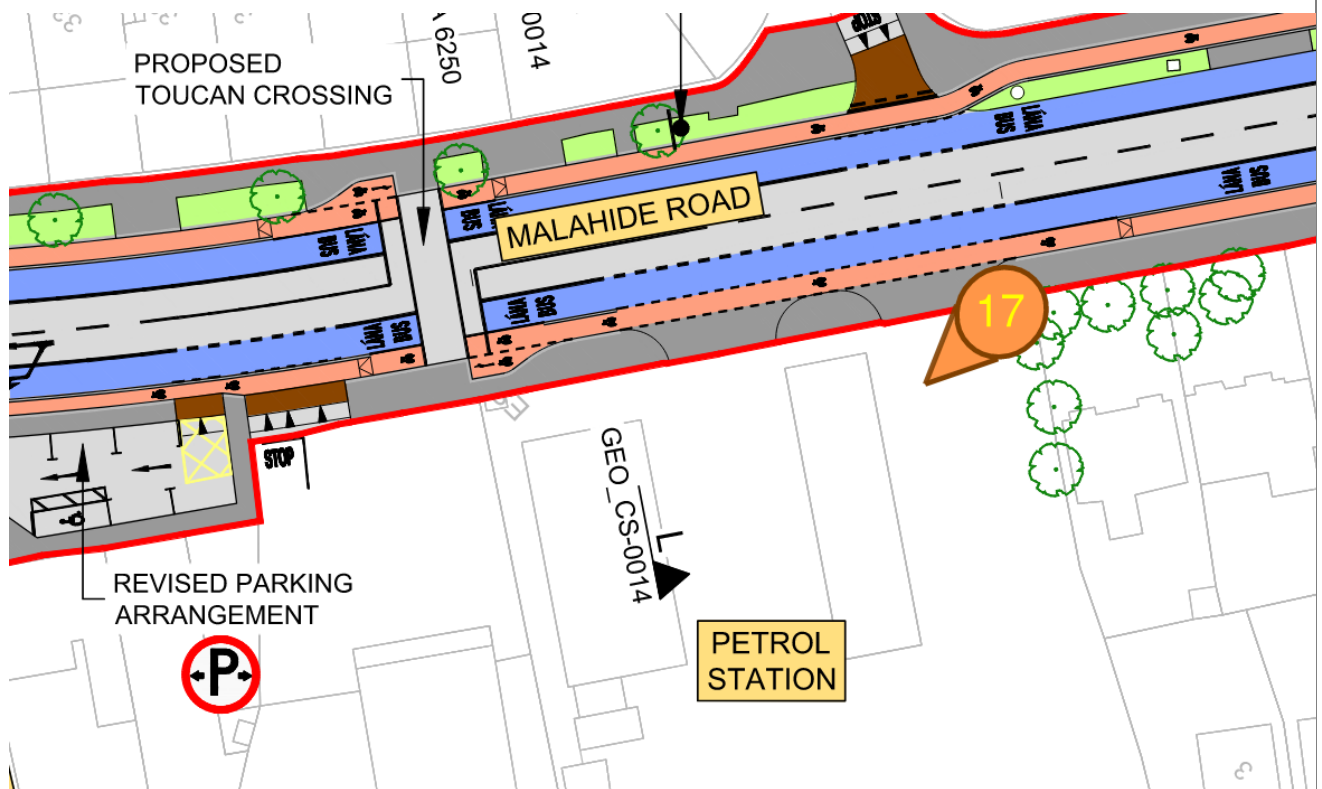



Photo ID	Caption	Date Taken	Coordinates
Clongriffin_Image18	Image of Circle K Maypark Service Station at Donnycarney.	09/07/2021	718565, 737699 (ITM)



Key plan

 Circle denotes approximate location of photo
with triangle denoting approximate direction of photo

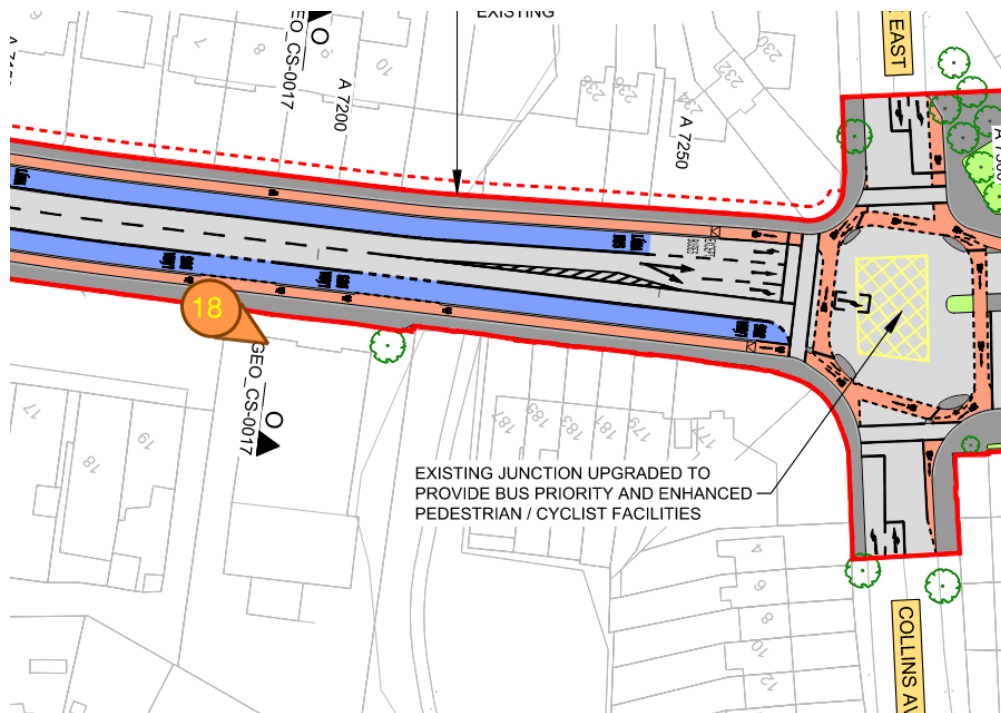


Photo ID	Caption	Date Taken	Coordinates
Clongriffin_Image19	Image of the location of the culverted River Wad at Donnycarney Bridge.	09/07/2021	718544, 737691 (ITM)



Key plan



Circle denotes approximate location of photo
 with triangle denoting approximate direction of photo

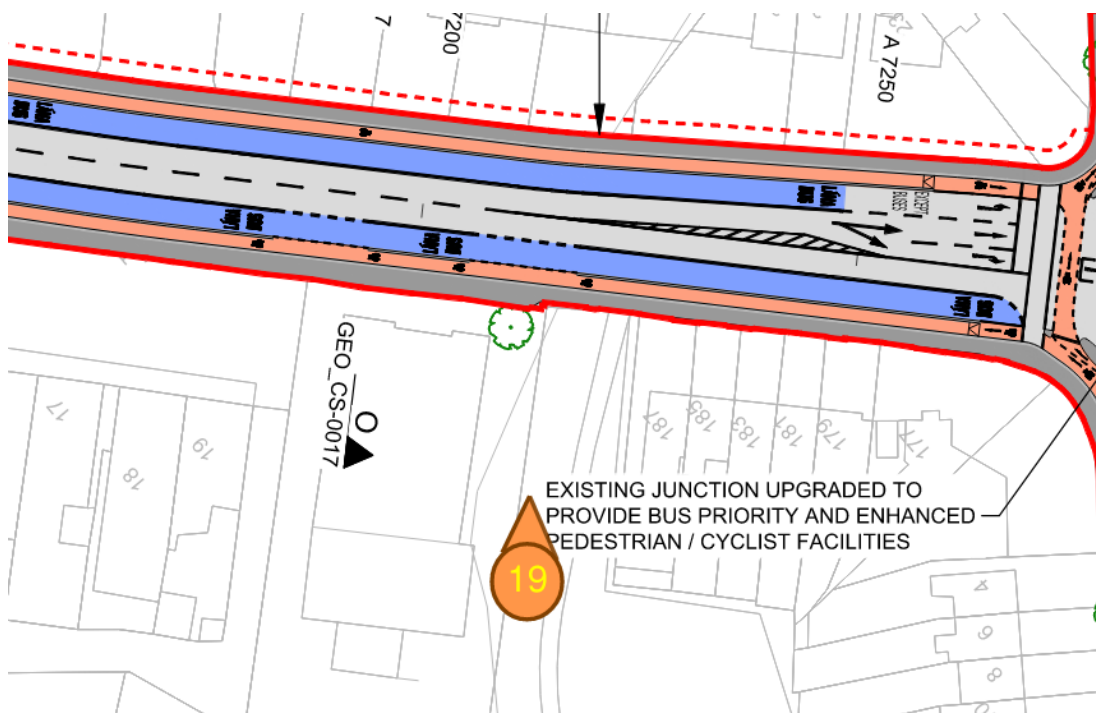



Photo ID	Caption	Date Taken	Coordinates
Clongriffin_Image20	Image of Donnycarney Bridge.	09/07/2021	718564, 737678 (ITM)



Key plan

 Circle denotes approximate location of photo
 with triangle denoting approximate direction of photo

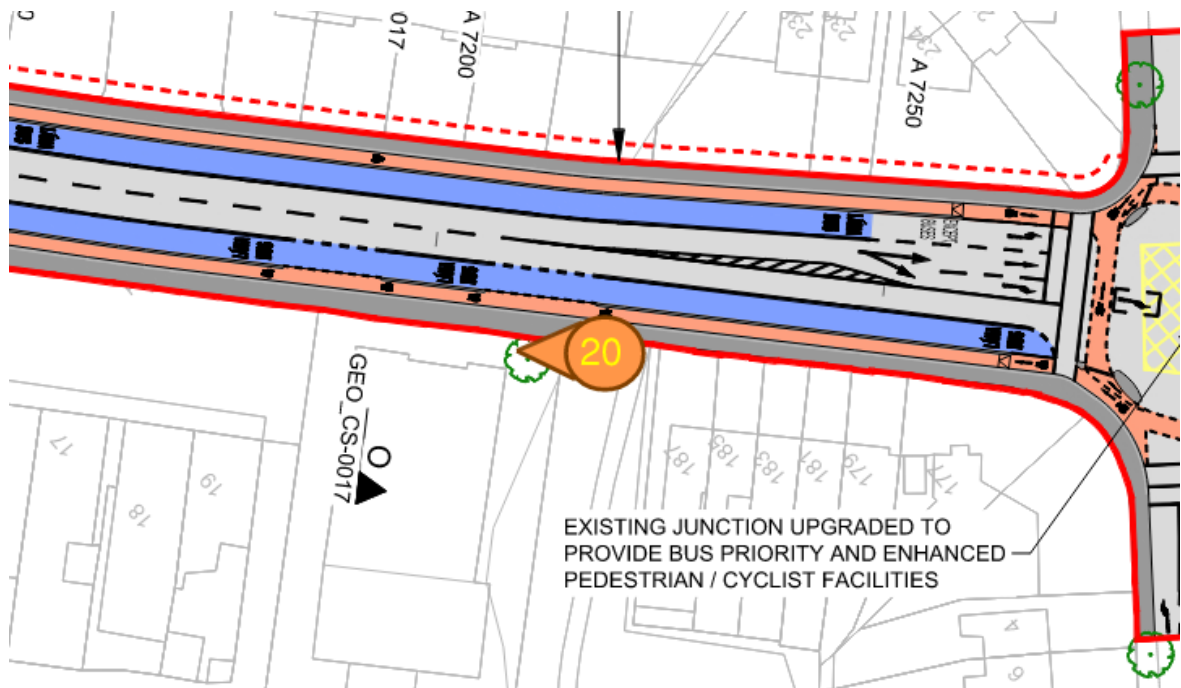



Photo ID	Caption	Date Taken	Coordinates
Clongriffin_Image21	Image of the proposed alternative cycle road near St. Aidan's Park	09/07/2021	717769, 736445 (ITM)



Key plan

 Circle denotes approximate location of photo
with triangle denoting approximate direction of photo

